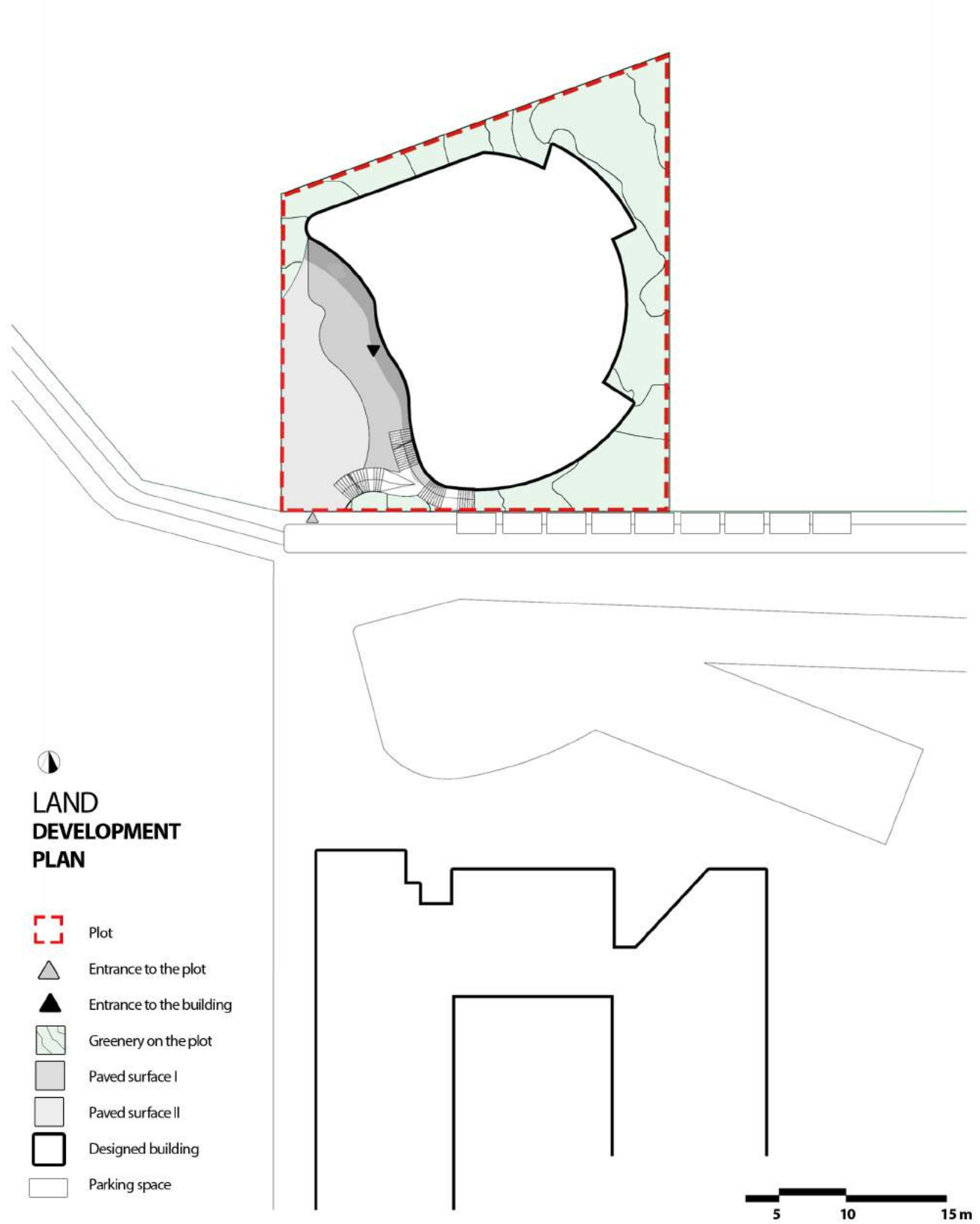




# Nature Inspired Youth Center

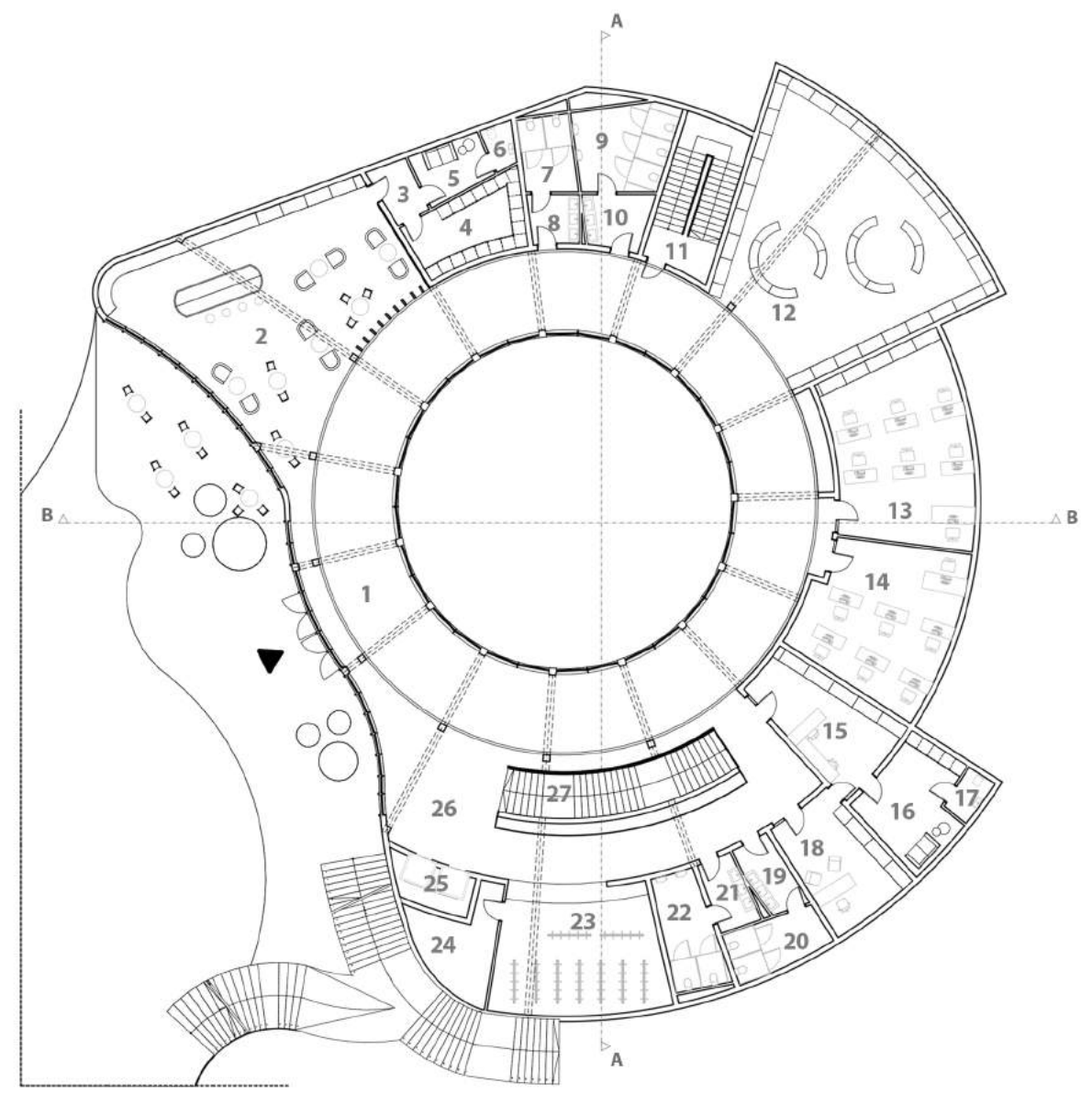
Underground Center



The project below presents the concept of a youth center. In accordance with the assumptions, the project combines architecture and nature, creating a building hidden in the ground with multiple functions. Inside the complex, rooms for recreation, physical activity and artistic activities are planned. The designed café, as well as the internal courtyard, are spaces that are fully conducive to the integration of both young people and children. The entrance hall allows you to let in plenty of light through the use of large glazing revealing the inner courtyard. On the right-hand side, there are elevators and a cloakroom for clothes. In the opposite corner there is a cafe with direct access to the entrance part, next to which you can easily fit tables allowing you to drink good coffee or eat ice cream surrounded by nature. The first floor also includes the reading room, allowing you to spend your free time reading books or studying after school. The next rooms are two computer rooms that act as free labs, both for classes with the teacher as part of, for example, science clubs, additional classes where young people can expand their passions and skills, as well as rooms for spending time individually by each user. The glazed part of the corridor is based on a circular plan, thus allowing for the supply of the right amount of daylight from the outside. From the entrance side, more representative stairs have been designed that lead directly to the lower floor of the building. The entire building is covered with a green roof, thanks to which the body is inconspicuous, leaving the natural space almost intact. The opening marking the inner courtyard was separated by a glass balustrade, thus allowing users to safely enjoy the charms of nature also on the roof of the facility. External stairs, located right at the entrance to the building, lead to a part of the roof. An additional form of lighting are skylights designed both on the roof of the building in the form of glass tubes and round glass openings in the entrance area.

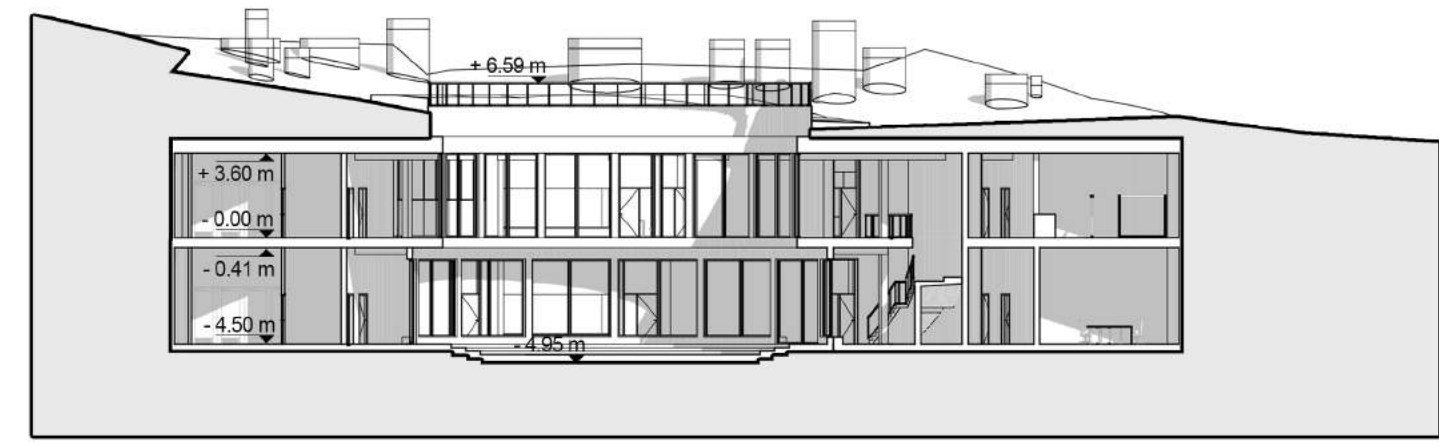
**AREA BALANCE**

<b>2500,0 m<sup>2</sup></b>	<b>100%</b>	Land area
<b>809,3 m<sup>2</sup></b>	<b>81,5%</b>	Biologically active surface
<b>+ 1228,9 m<sup>2</sup></b> (green roof)		
<b>461,8 m<sup>2</sup></b>	<b>18,5%</b>	Paved surface



1	Hall	238,7 m <sup>2</sup>
2	Café	108,3 m <sup>2</sup>
3	Corridor	5,0 m <sup>2</sup>
4	Kitchen	16,7 m <sup>2</sup>
5	Staff room	7,9 m <sup>2</sup>
6	Staff's Toilet	2,6 m <sup>2</sup>
7	Women's toilet	8,4 m <sup>2</sup>
8	Women's toilet	5,2 m <sup>2</sup>
9	Men's toilet	17,2 m <sup>2</sup>
10	Men's toilet	7,2 m <sup>2</sup>
11	Staircase	22,6 m <sup>2</sup>
12	Reading room	109,2 m <sup>2</sup>
13	Computer room	55,4 m <sup>2</sup>
14	Computer room	46,1 m <sup>2</sup>
15	Secretary's office	24,8 m <sup>2</sup>
16	Staff room	19,5 m <sup>2</sup>
17	Staff's Toilet	3,0 m <sup>2</sup>
18	Office	22,3 m <sup>2</sup>
19	Women's toilet	6,7 m <sup>2</sup>
20	Women's toilet	10,3 m <sup>2</sup>
21	Men's Toilet	6,2 m <sup>2</sup>
22	Men's toilet	12,7 m <sup>2</sup>
23	Cloakroom	45,4 m <sup>2</sup>
24	Technical room	14,3 m <sup>2</sup>
25	Elevator shaft	7,1 m <sup>2</sup>
26	Hall	98,4 m <sup>2</sup>
27	Staircase	22,3 m <sup>2</sup>
		<b>943,5 m<sup>2</sup></b>

**FLOOR PLAN STOREY 0**



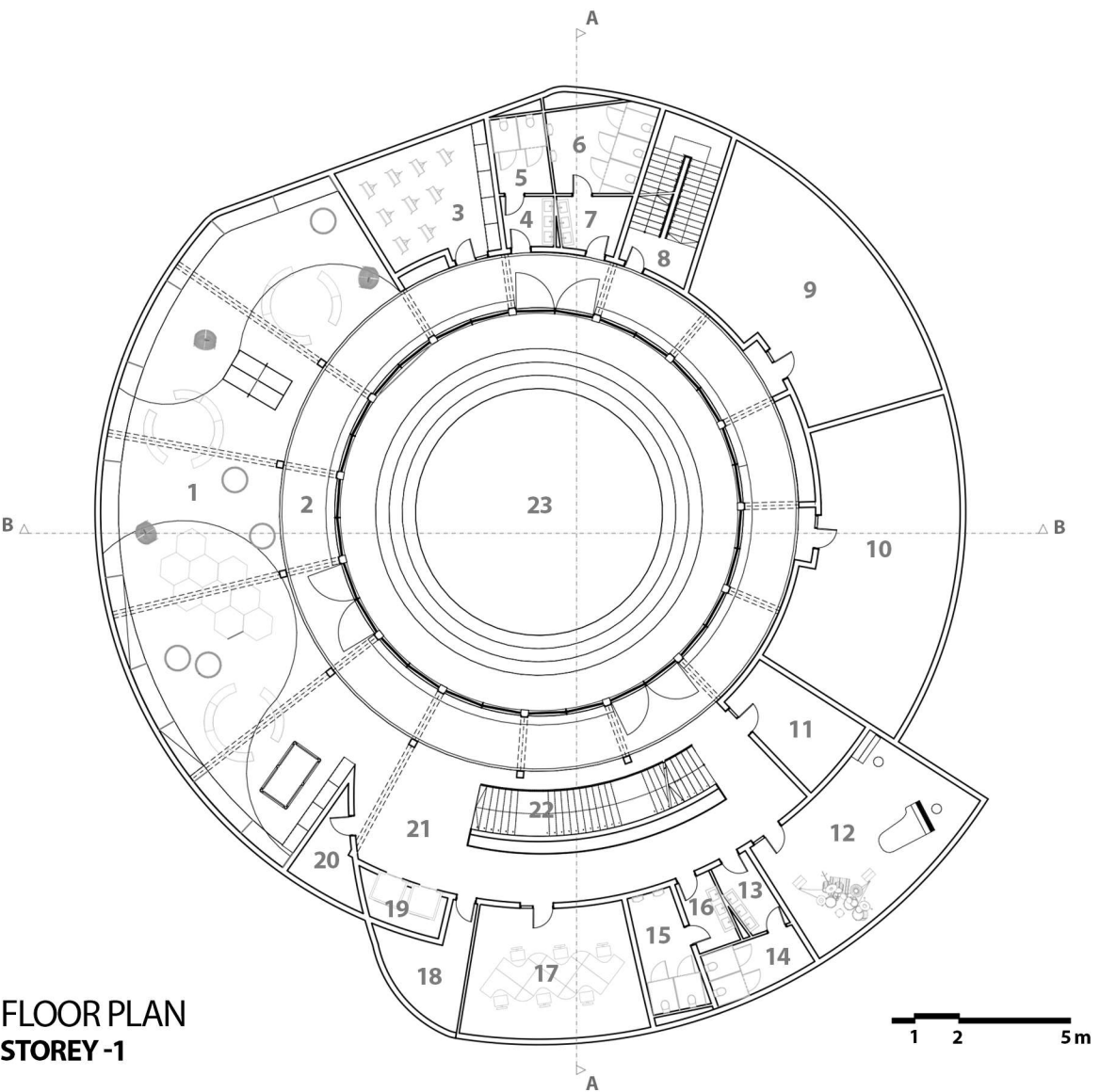
**CROSS-SECTION A - A**





# Nature Inspired Youth Center

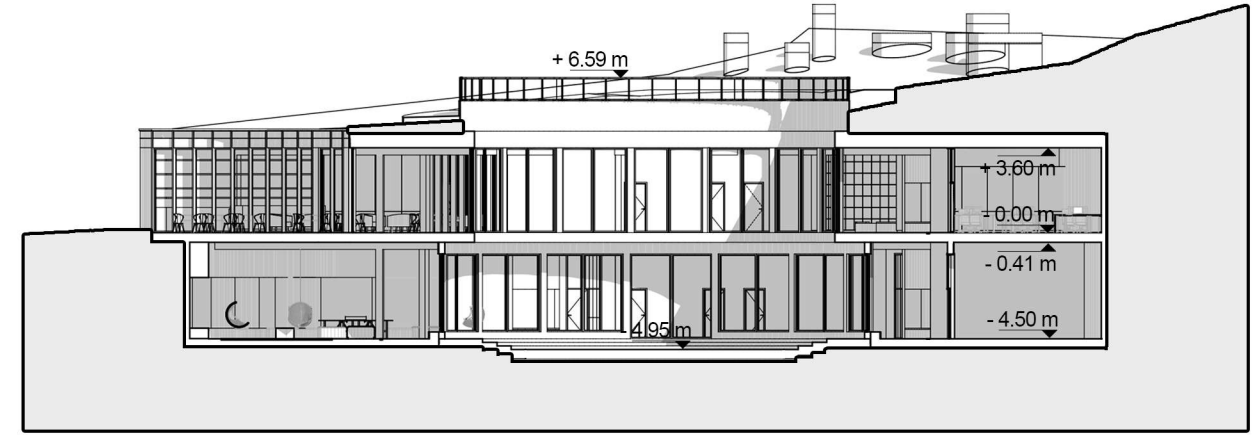
Underground Center



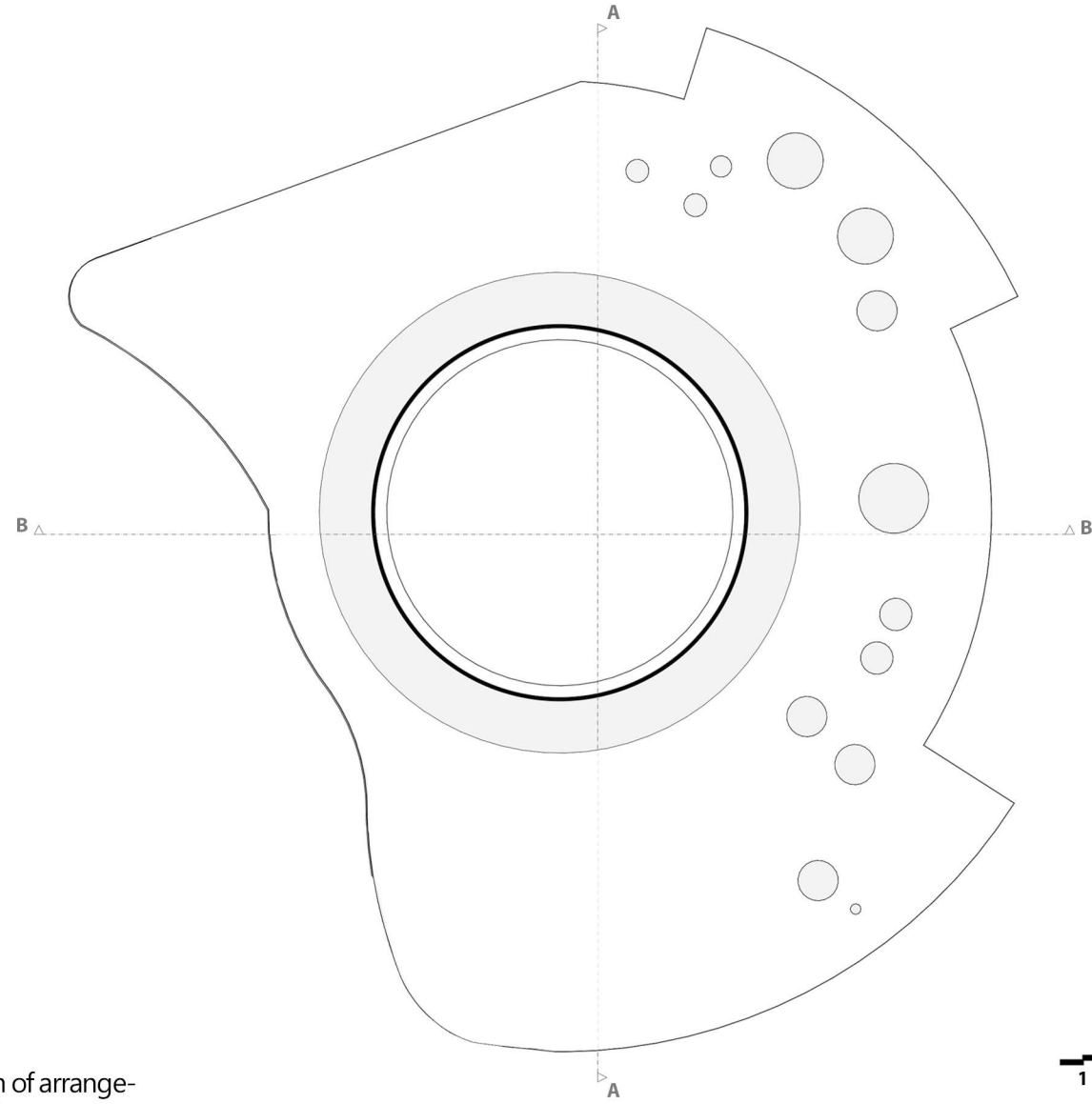
FLOOR PLAN  
STOREY -1

1	Open recreational space	241,4 m <sup>2</sup>
2	Hall	177,6 m <sup>2</sup>
3	Art room	32,1 m <sup>2</sup>
4	Women's toilet	5,2 m <sup>2</sup>
5	Women's toilet	8,4 m <sup>2</sup>
6	Men's toilet	17,2 m <sup>2</sup>
7	Men's toilet	7,2 m <sup>2</sup>
8	Staircase	22,6 m <sup>2</sup>
9	Room for physical activities	76,8 m <sup>2</sup>
10	Room for physical activities	87,9 m <sup>2</sup>
11	Storeroom	17,9 m <sup>2</sup>
12	Music room	52,6 m <sup>2</sup>
13	Women's toilet	6,7 m <sup>2</sup>
14	Women's toilet	10,3 m <sup>2</sup>
15	Men's toilet	12,7 m <sup>2</sup>
16	Men's toilet	6,2 m <sup>2</sup>
17	Room for group work	44,3 m <sup>2</sup>
18	Technical room	14,3 m <sup>2</sup>
19	Elevator shaft	7,1 m <sup>2</sup>
20	Technical room	8,8 m <sup>2</sup>
21	Hall	94,2 m <sup>2</sup>
22	Staircase	22,3 m <sup>2</sup>
23	Courtyard	251,7 m <sup>2</sup>
		<b>1225,5 m<sup>2</sup></b>

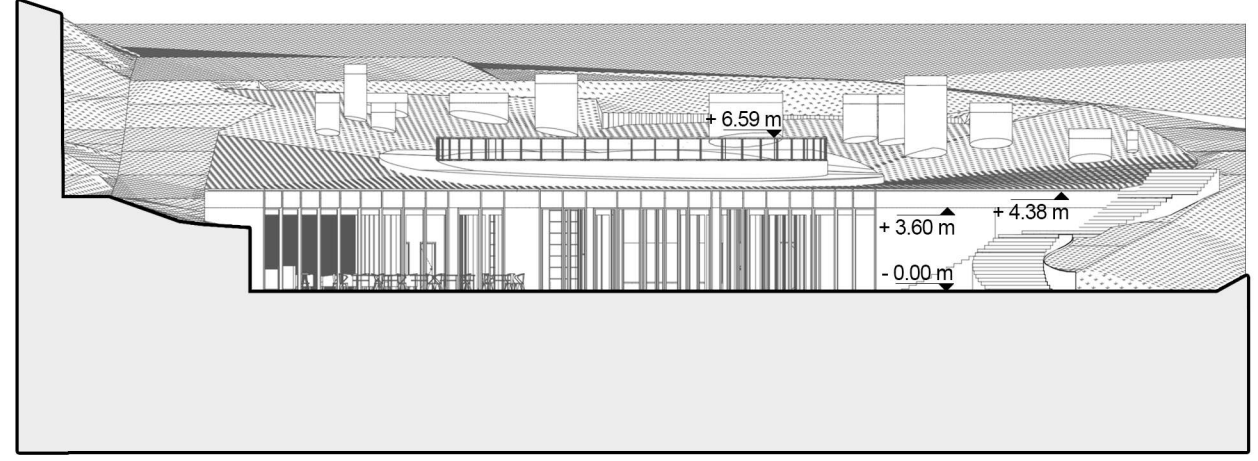
Level -1 has a large open space allowing for complete freedom of arrangement, creating a pleasant recreational space. It is a designed play zone that allows you to insert a ping-pong table, billiards or seats, creating a space for integration and games. The inner courtyard has become an extension of this zone, which is an additional attraction, and at the same time smoothly connects the interior with the exterior. At this level, there are also rooms for artistic and musical creativity, as well as two rooms for physical activities and a room for group work.



CROSS-SECTION  
B - B



ROOF PLAN



FRONT ELEVATION  
WESTERN

The facade of the building includes only the front façade, which was made of wooden facade panels. The vertical divisions of the windows have been emphasized with vertical strips that allow to emphasize the line, and also create an interesting effect enhanced by chiaroscuro. A large number of glazing allows for good lighting of the interior, and also creates a transparent effect of connecting the internal and external parts, allowing the zones to permeate.

The entire project was created with the greatest possible transparency in mind, maintaining the existing surroundings to such an extent that the designed body would not disturb the existing environment. During the design process, care was taken to ensure that the building blends in with its surroundings, while maintaining its functionality and aesthetics. The use of natural materials and neutral colors allowed for the preservation of harmony, and the interior and exterior, combined with the surrounding greenery, gives a sense of peace and rest.